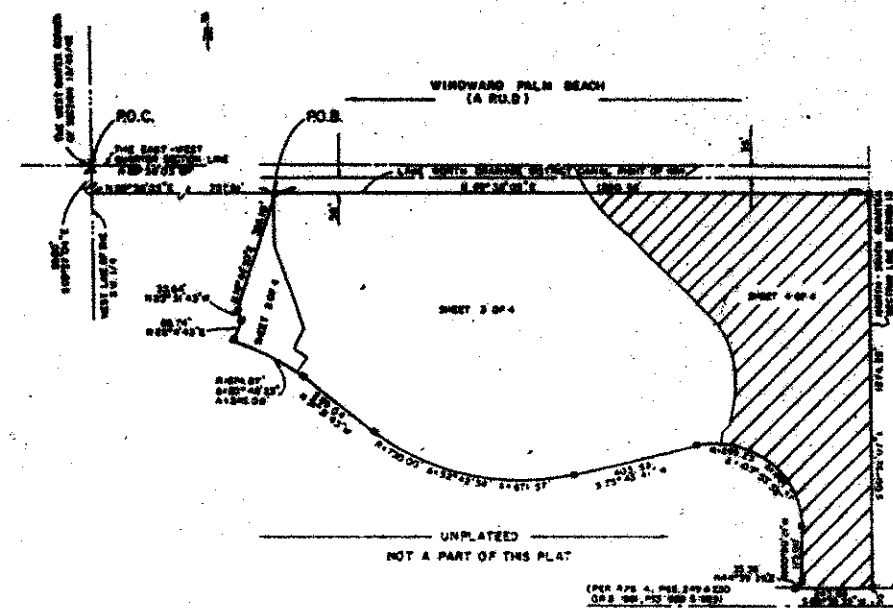


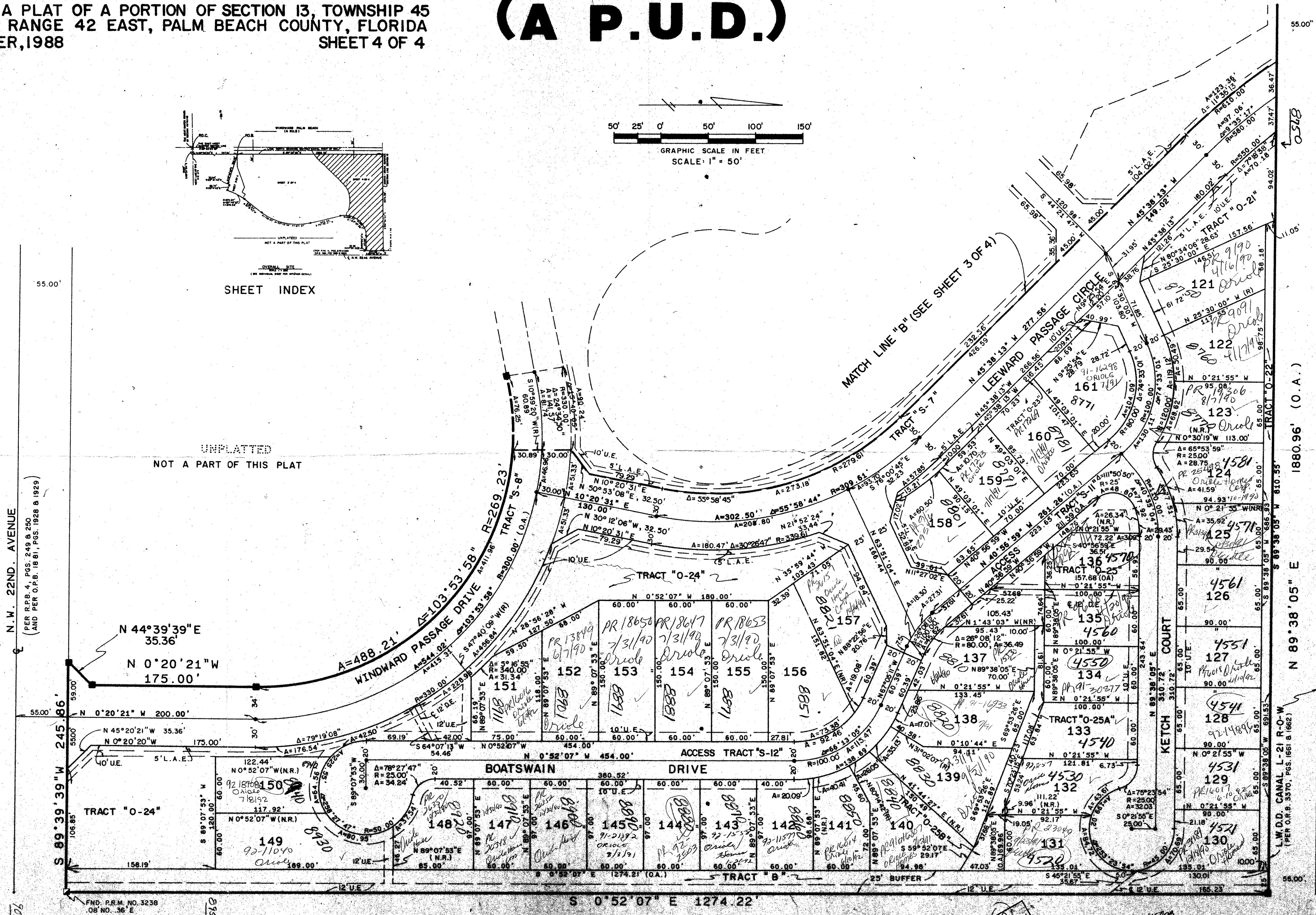
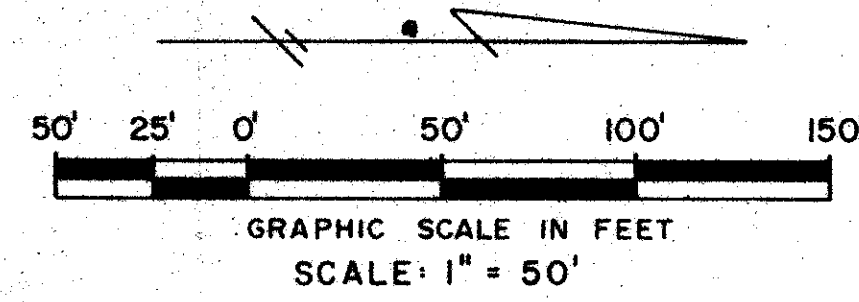
WINDWARD PALM BEACH PLAT TWO

BEING A PLAT OF A PORTION OF SECTION 13, TOWNSHIP 45 SOUTH, RANGE 42 EAST, PALM BEACH COUNTY, FLORIDA
OCTOBER, 1988
SHEET 4 OF 4

(A P.U.D.)



SHEET INDEX



SUBDIVISION: Windward Palm Beach
BOOK: 62
PAGE: 125
FLOOD MAP: 17920
ZONING: 78-225
ZIP CODE: 33436
R.D. NAME: H. P. R. D.

SHEET 3 of 4
WINDWARD PALM BEACH
PLAT TWO
Pet. 78-225
0340-002

APP. BY: [Signature]
CHECKED BY: [Signature]

METRIC ENGINEERING
REGISTERED - PLANNING - SURVEYING
ENGINEERS - FORT LAUDERDALE
3001 N.W. 11th Street - Fort Lauderdale, FL 33309

62/128
WINDWARD PALM BEACH
PLAT TWO
SHEET 4 OF 4